



# 5M 32A (7.4KW) 1PH TYPE 2 TO TYPE 2 EV CHARGING CABLE

MODEL NO: **EVCC227KW**

Thank you for purchasing a Sealey product. Manufactured to a high standard, this product will, if used according to these instructions, and properly maintained, give you years of trouble free performance.

**IMPORTANT:** PLEASE READ THESE INSTRUCTIONS CAREFULLY. NOTE THE SAFE OPERATIONAL REQUIREMENTS, WARNINGS & CAUTIONS. USE THE PRODUCT CORRECTLY AND WITH CARE FOR THE PURPOSE FOR WHICH IT IS INTENDED. FAILURE TO DO SO MAY CAUSE DAMAGE AND/OR PERSONAL INJURY AND WILL INVALIDATE THE WARRANTY. KEEP THESE INSTRUCTIONS SAFE FOR FUTURE USE.



Refer to instruction manual

## 1. SAFETY

### 1.1. GENERAL SAFETY

- ✓ Familiarise yourself with the product before using it for the first time. Read through the following operating and safety instructions carefully before use. They form part of the product and must be available at all times.
- ✓ **KEEP OUT OF THE REACH OF CHILDREN!**
- ✓ **Intended use:** Using the charging cable, electric and hybrid cars, can be charged from a charging infrastructure intended for this purpose. Any other use is not permitted and is therefore regarded as improper use. The charging cable is only safe, if these operating instructions and the documentation for the car are followed.
- ✓ Before using the charging cable, you must read these operating instructions and the documentation for the car.
- ✓ When the charging cable is being used, observe the instructions as described.
- ✓ Failure to do this can lead to personal injury or damage to property, such as, for example, electric shock, short circuit or fire.
- ✓ Any other use may cause damage to the device and expose the user to a risk of serious injury. The manufacturer is not liable for any injury or damage resulting from improper use.
- ✓ **NOTE:** In case of doubt, get a qualified electrician to check that the charging infrastructure is suitable.
- ✓ The charging cable has been developed for consumer use and is not suitable for use in a commercial or industrial environment.
- ✓ The product must only be used by people who have been trained to do so.

### 1.2. SPECIFIC SAFETY INSTRUCTIONS

#### 1.2.1. PERSONAL SAFETY:

- ✓ Keep children and animals away from the charging cable.
- ✗ **DO NOT** allow children to play with the charging cable. Cleaning and day-to-day maintenance must not be performed by children.
- ✓ Children must be supervised to ensure that they do not play with the device.
- ✓ Within the working area, the user is responsible for any damage or injury to third parties that was caused by the use of the device. during operation, never point the charging cable at yourself or other individuals, and keep the charging cable well way from your ears and eyes. There is a risk of injury! Keep the device in a dry location and out of the reach of children.

#### 1.2.2. OPERATIONAL SAFETY

- ✗ **DO NOT** use the charging cable while driving the vehicle.
- ✓ Before setup or first use, check the charging cable for any damage and do not use unless in perfect working order.
- ✗ **DO NOT** immerse the charging cable in water. There is a risk of electric shock!
- ✓ In hot weather, **DO NOT** leave the charging cable in a car. This could permanently damage the charging cable.
- ✓ Both the charging cable and plug, may become warm during operation. There is a risk of burn injuries from touching the hot surfaces.
- ✗ **DO NOT** operate the charging cable near to flammable liquids or gases. Failure to do so risks causing a fire or explosion!
- ✓ Unplug the plug from the charging infrastructure and the plug from the car:
  - When you are not using the charging cable; If you are doing cleaning work;
  - If the connection cable is damaged;
  - If foreign objects have got into the device or you notice unusual noises.
- ✓ Only use the accessories supplied and recommended by the manufacturer.
- ✗ **DO NOT** disassemble or modify the charging cable. The charging cable must only be repaired by a qualified maintenance technician.
- ✗ **DO NOT** use the charging cable in areas with a risk of explosion, e.g. near flammable liquids, gases or powders.
- ✗ **DO NOT** expose the charging cable to any source of heat.
- ✗ **DO NOT** store in places where the temperature may exceed 50 °C.
- ✗ **DO NOT** connect the charging cable to a faulty or unsuitable charging infrastructure, which, for example, is not designed for the continuous use required.
- ✓ Protect the plug connections and plug devices from moisture and liquids.
- ✗ **DO NOT** step on or drive over plugs, charging cable connecting cables.
- ✗ **DO NOT** jam or kink charging and connection cables.
- ✗ **DO NOT** touch plugs with wet hands.
- ✓ When the charging cable is not being used, always keep the cover caps onto the plugs.
- ✓ The charging cable must not be used if it is not possible to operate it properly in accordance with the instructions. Refer to the manufacturer, a responsible dealer or an electrician for advice.

### 1.3. ELECTRICAL SAFETY How to avoid accidents and injuries resulting from electric shock:

- ✗ **DO NOT** carry the charging cable by the cable.
- ✗ **DO NOT** unplug the plug from the charging infrastructure or the car by pulling on the charging cable.

- ✓ Protect the cable from heat, oil and sharp edges.
- ✓ If the cable is damaged, unplug the plug immediately. A damaged charging cable can lead to death or serious injuries. Before each use, check the charging cable for damage (e.g. cracks). Do not use damaged charging cables.
- ✗ **DO NOT** short circuit the contacts on the T2 plug. This can lead to a hazardous situation!
- ✗ **DO NOT** put fingers or sharp objects into the plug contacts.
- ✗ **DO NOT** hold plugs under water or immerse in water.
- ✗ **DO NOT** use an adapter plug or extension cable. The charging cable must be plugged directly into the charging infrastructure and the car.
- ✓ Only use the charging cable when the ambient temperature is between -30 °C and 50 °C. A slightly higher temperature during charging is absolutely normal and not a malfunction.
- ✓ Protect the charging cable from moisture and high temperatures, including fires.  
Store the charging cable in a dry place and protect the device from moisture and corrosion.
- ✗ **DO NOT** drop the charging cable while it is being used.
- ✓ The charging cable is designed for electric cars with a Type 2 plug.
- ✓ When using the charging cable make sure that the both connector plugs and are securely in place.

## 2. INTRODUCTION

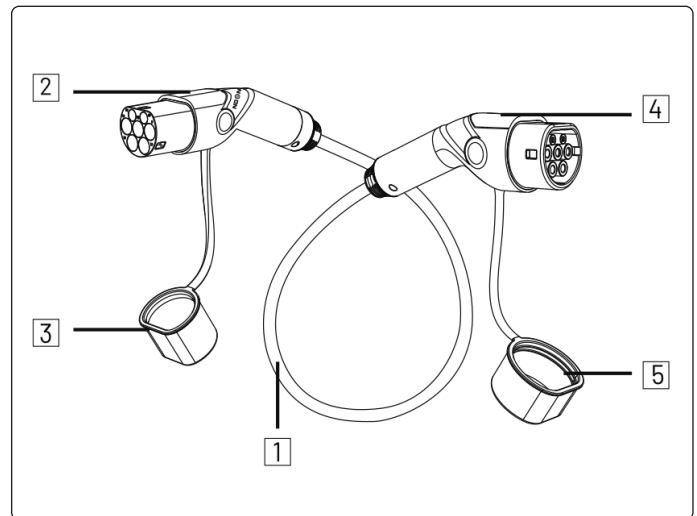
The Mode-3 Type 2 charging cable simply plugs into any work, home or public EV charging point. Charger is rated 32A with a maximum charge rate of 7.4kw. Cable Length 5m. Durable IP65 rated weatherproof design. Supplied in a storage bag.

## 3. SPECIFICATION

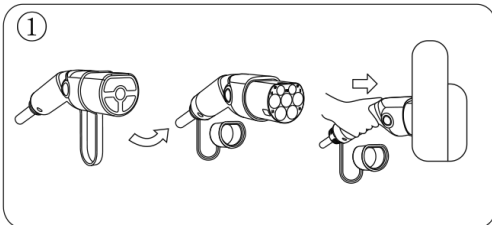
Model No: .....EVCC227KW  
 Electrical Class: ..... 1ph  
 Length: ..... 5m  
 Weight: ..... 2.2kg

## 4. CONTENTS

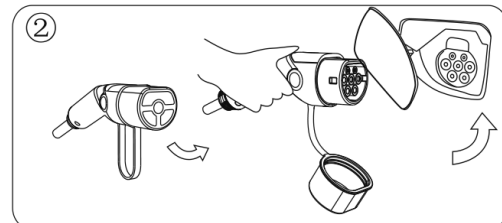
1. Cable wire
2. Type 2 plug (Infrastructure)
3. Cover cap for infrastructure plug
4. Type 2 plug (car side)
5. Cover cap for car side plug
6. Storage bag (not shown)



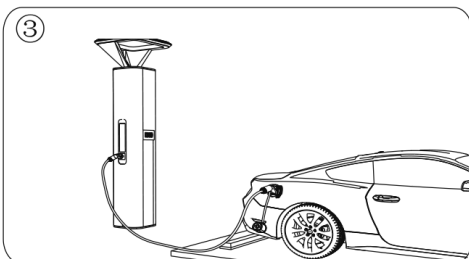
## 5. OPERATION



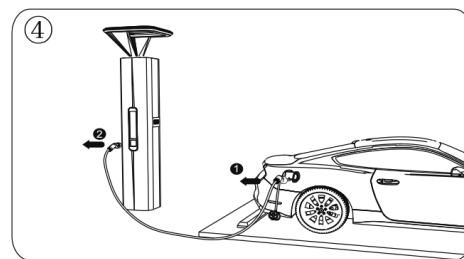
Insert the cable plugs into vehicle outlet and charging station outlet



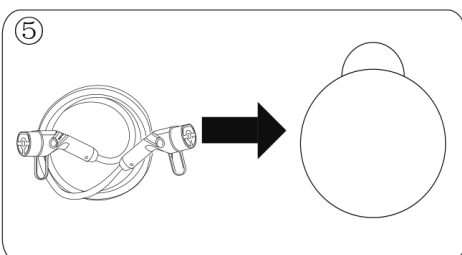
Make sure both plugs are properly connected, charging will start



**DO NOT** disconnect the charging cable whilst the vehicle is charging



After charging is completed, unplug the charging cable from the Vehicle, then from the charging station



Place the caps on both ends of the cable and store in bag

## 6. CLEANING

**NOTE:** The charging cable must not be submersed in water. There is a risk of injury, due to electric shock if moisture enters the device.

\* **DO NOT** use cleaners or solvents. These could damage the charging cable beyond repair.

6.1. Keep the charging cable and plugs clean. Use a damp cloth or a soft brush to clean the charging cable.

## 7. STORAGE

7.1. Keep the charging cable in a dry location and out of the reach of children.

7.2. To avoid damage, take care to ensure that the charging cable does not become kinked.



### WEEE REGULATIONS

Dispose of this product at the end of its working life in compliance with the EU Directive on Waste Electrical and Electronic Equipment (WEEE). When the product is no longer required, it must be disposed of in an environmentally protective way. Contact your local solid waste authority for recycling information.



### ENVIRONMENT PROTECTION

Recycle unwanted materials instead of disposing of them as waste. All tools, accessories and packaging should be sorted, taken to a recycling centre and disposed of in a manner which is compatible with the environment. When the product becomes completely unserviceable and requires disposal, drain any fluids (if applicable) into approved containers and dispose of the product and fluids according to local regulations.

**Note:** It is our policy to continually improve products and as such we reserve the right to alter data, specifications and component parts without prior notice.

**Important:** No Liability is accepted for incorrect use of this product.

**Warranty:** Guarantee is 12 months from purchase date, proof of which is required for any claim.



REGISTER YOUR  
PURCHASE HERE

**Jack Sealey Ltd t/a Sealey Group**, Kempson Way, Suffolk Business Park, Bury St Edmunds, Suffolk, IP32 7AR UK

**Jack Sealey (EU) Ltd t/a Sealey Group**, Farney Street, Carrickmacross, Co. Monaghan, A81 PK68 Ireland

**Tel:** 01284 757500 - **Email:** sales@sealey.co.uk - **Web:** www.sealey.co.uk